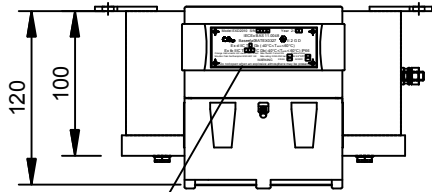
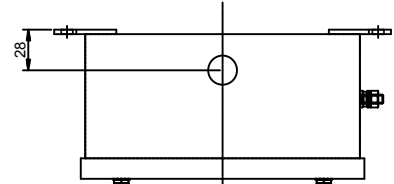


NAMEPLATE TO BE STAMPED WITH SERIAL NO, YEAR AND T85°C

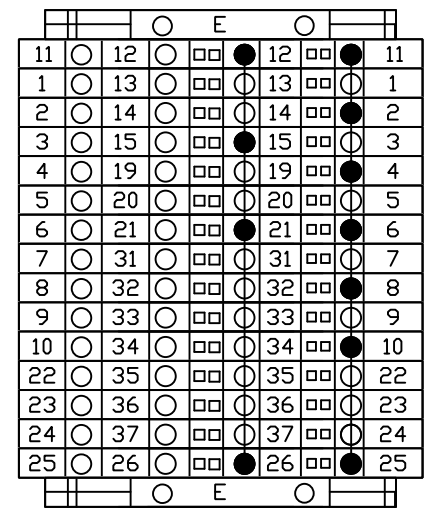


NOTE:
28MM DIMENSION FROM
CENTER OF THE HOLE TO THE
BACK OF SUPPORT TAB.



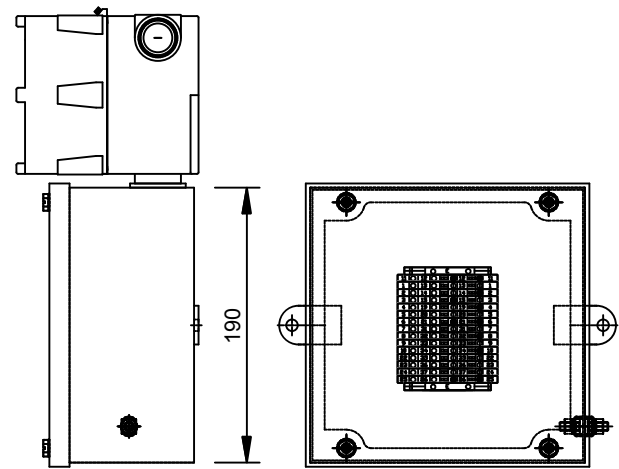
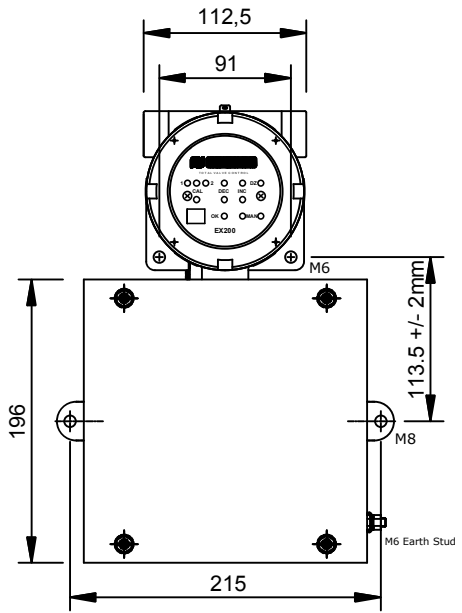
1 x M20 CABLE ENTRIES ON TOP FACE
NOT FITTED WITH BLANKING PLUG

TOP VIEW
EXD ENCLOSURE NOT SHOWN



TERMINAL LAYOUT

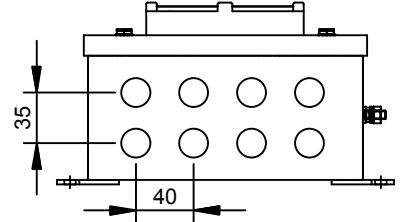
TERMINAL CONNECTIONS	
BOTTOM ROW	TOP ROW
11 EX200 24VDC Supply +ve	12 EX200 24VDC Supply -ve
1 Increase Solenoid -ve	13 Retransmitted 4-20mA +ve
2 Increase Solenoid +ve	14 Retransmitted 4-20mA -ve
3 Decrease Solenoid -ve	15 External Fault (Link)
4 Decrease Solenoid +ve	19 External Fault (Link)
5 Auxiliary Solenoid -ve	20 Command 4-20mA +ve
6 Auxiliary Solenoid +ve	21 Command 4-20mA -ve
7 Fault Output -ve	31 Spare Terminal
8 Fault Output +ve	32 Spare Terminal
9 Pump Control -ve	33 Spare Terminal
10 Pump Control +ve	34 Spare Terminal
22 5V Excitation - Not used	35 Spare Terminal
23 Feedback 4-20ma +ve	36 Spare Terminal
24 Feedback 4-20ma -ve	37 Spare Terminal
25 24VDC Output +ve	26 24VDC Output -ve



INTERNAL VIEW

TERMINALS :
15 x WDK2.5 DOUBLE DECK AND 2 x WPE2.5
WDK2.5 TERMINALS NUMBERED
DIFFERENTLY TOP AND BOTTOM AS SHOWN
LINKING : TERMINAL POINTS NUMBERED 12,
15, 21, 26 LINKED. TERMINAL POINTS
NUMBERED 2, 4, 6, 8, 10, 11, 25 LINKED

TERMINALS TO BE NUMBERED ON BOTH
SIDES



8 x M20 CABLE ENTRIES ON BASE
ALL FITTED WITH NYLON EXE BLANKING PLUGS

NOTES

EXE ENCLOSURE SPECIFICATION

ENCLOSURE TYPE : CCH STB191910
MATERIAL : 316 STAINLESS STEEL
INGRESS PROTECTION : IP66
CERTIFICATION : II 2 G D Exe IIC T6

EXD ENCLOSURE SPECIFICATION

ENCLOSURE TYPE : BIFOLD ORANGE EXD2010
MATERIAL : STAINLESS STEEL
CERTIFICATION : II 2 G D Exd IIC T6

REV	DATE	DRAWN	CHECKED	DESCRIPTION
A	13/10/14	PKD	BLD	ISSUED FOR PRODUCTION

IF IN DOUBT - ASK.
THIS DRAWING REMAINS OUR PROPERTY AND MAY NOT BE
COPIED OR PASSED ON TO A THIRD PARTY WITHOUT
OUR WRITTEN PERMISSION.

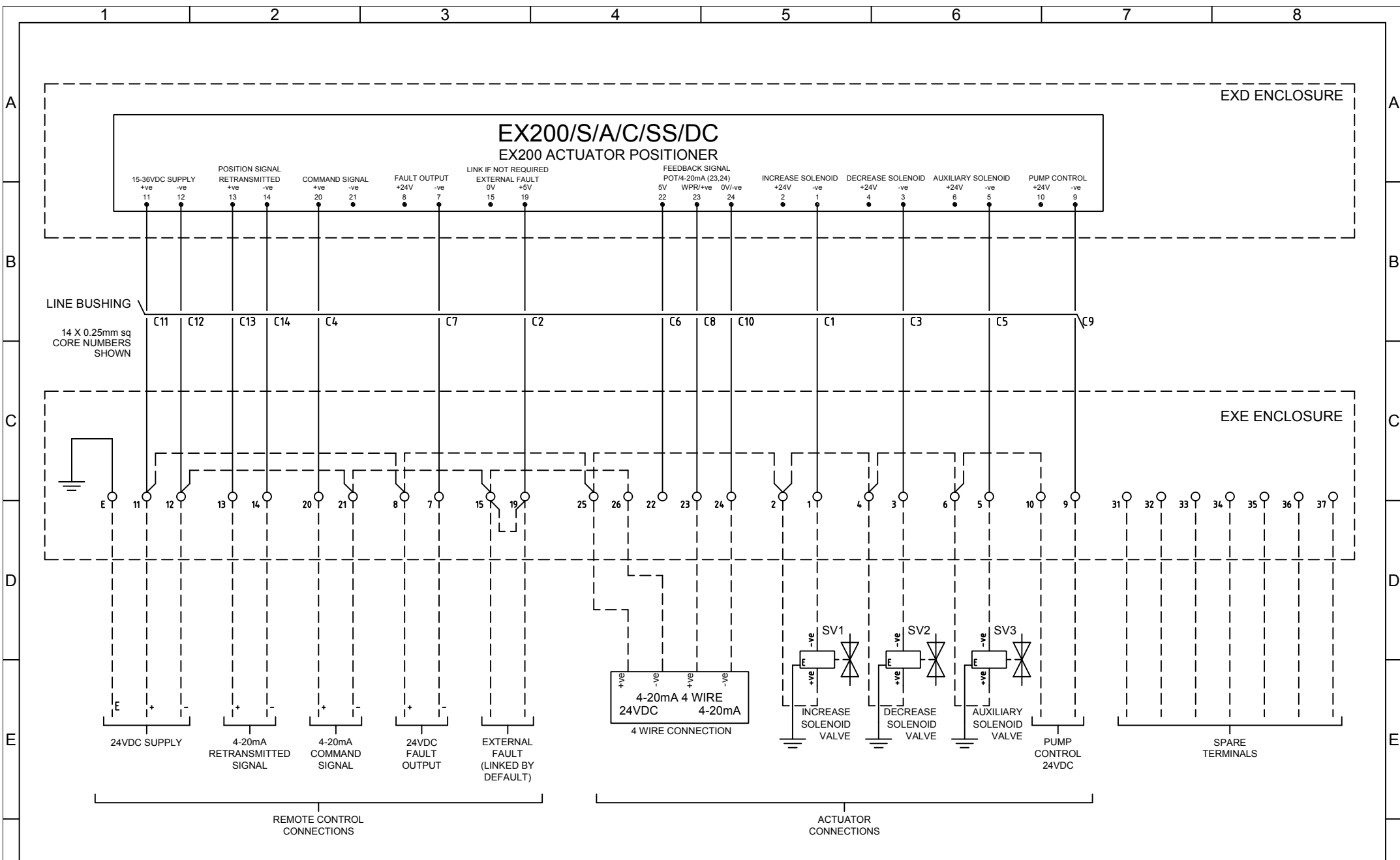
DRAWN	PKD
DATE	15/10/14
CHECKED	BLD
DATE	15/10/14

PROJECT
EX200/S/A/C/SS/DC/JB/SS/8B/M20 PALDON VERSION
EX200 SET FOR 4-20mA FEEDBACK IN ST ST EXD
HOUSING WITH ST ST JUNCTION BOX 8 x M20 IN BASE

TITLE
INSTALLATION LAYOUT DRAWING
EX200 HOUSING AND JUNCTION BOX



DRAWING No. ORI004	SHEET No. 1 OF 2	REV A
-----------------------	---------------------	----------



A	15/10/14	PKD	BLD	ISSUED FOR PRODUCTION
REV	DATE	DRAWN	CHECKED	DESCRIPTION

PROJECT
 EX200/S/A/C/SS/DC/JB/SS/8B/M20 PALADON VERSION
 EX200 SET FOR 4-20mA FEEDBACK IN ST ST EXD
 HOUSING WITH ST ST JUNCTION BOX 8 x M20 IN BASE



IF IN DOUBT - ASK.
 THIS DRAWING REMAINS OUR PROPERTY AND MAY NOT BE
 COPIED OR PASSED ON TO A THIRD PARTY WITHOUT
 OUR WRITTEN PERMISSION.

DRAWN	PKD	TITLE
DATE	15/10/14	INSTALLATION WIRING DRAWING
CHECKED	BLD	EX200 HOUSING AND JUNCTION BOX
DATE	15/10/14	

DRAWING No.	SHEET No.	REV
ORI0004	2 OF 2	A